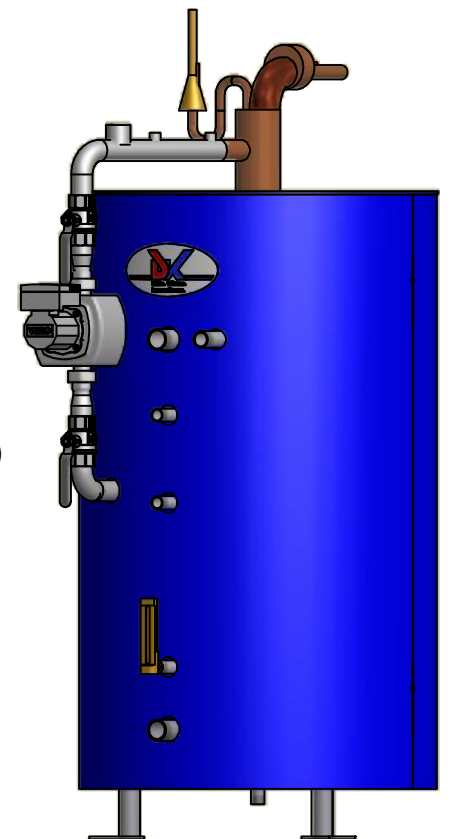


insulation:  
50mm PU-foam with  
GfK unplasticised coat (2 half dish)  
all connections  
vapour diffusion resistant glued.



volume	A = total height	B = $\varnothing$ vessel	C = $\varnothing$ with insulation	D = foot spacing 1	E = foot spacing 2	F = $\varnothing$ foot rotation	G = height insulation	H = height vessel with insulation	I = foot size	weight without additions
180ltr.	about 1212mm	500mm	610mm	315mm	364mm	420mm	1230mm	about 1336mm	1 1/4"	95kg
280ltr.	about 1186mm	600mm	710mm	382mm	442mm	510mm	1180mm	about 1286mm	1 1/4"	110kg
400ltr.	about 1670mm	600mm	710mm	382mm	442mm	510mm	1670mm	about 1776mm	1 1/4"	140kg
700ltr.	about 1904mm	750mm	860mm	442mm	511mm	590mm	1890mm	about 1996mm	2"	220kg
950ltr.	about 2424mm	750mm	860mm	442mm	511mm	590mm	2400mm	about 2506mm	2"	280kg