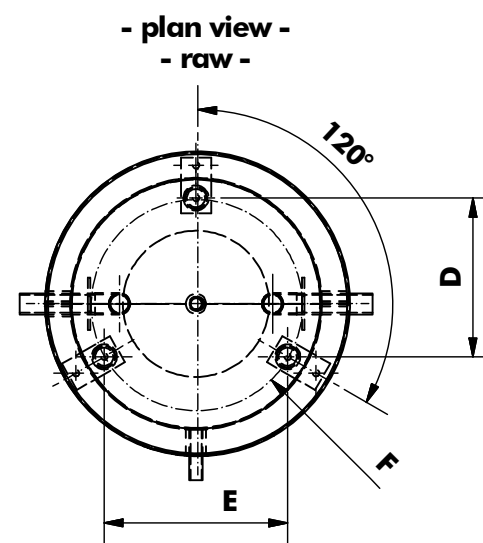
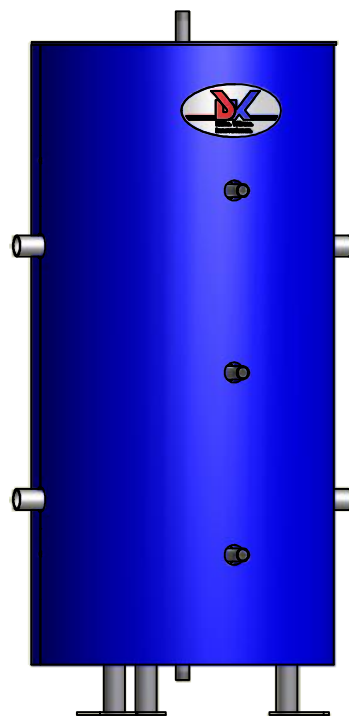
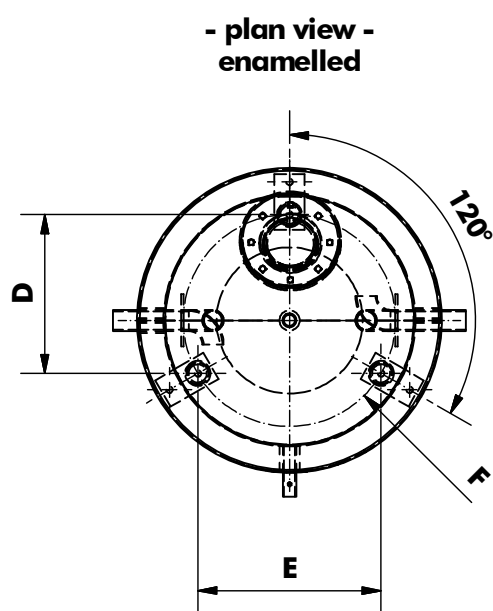


insulation:
50mm PU-foam with
GfK unplasticised coat (2 half dish)
all connections
vapour diffusion resistant glued.



volume	A = total height	B = ø vessel	C = ø insulation	D = foot spacing 1	E = foot spacing 2	F = ø foot rotation	G = height insulation	H = foot size	weight
180ltr.	about 1410mm	500mm	610mm	315mm	364mm	420mm	1230mm	1 1/4"	95kg
280ltr.	about 1350mm	600mm	710mm	382mm	442mm	510mm	1180mm	1 1/4"	110kg
400ltr.	about 1840mm	600mm	710mm	382mm	442mm	510mm	1670mm	1 1/4"	140kg
700ltr.	about 2060mm	750mm	860mm	442mm	511mm	590mm	1890mm	2"	220kg
950ltr.	about 2580mm	750mm	860mm	442mm	511mm	590mm	2400mm	2"	280kg